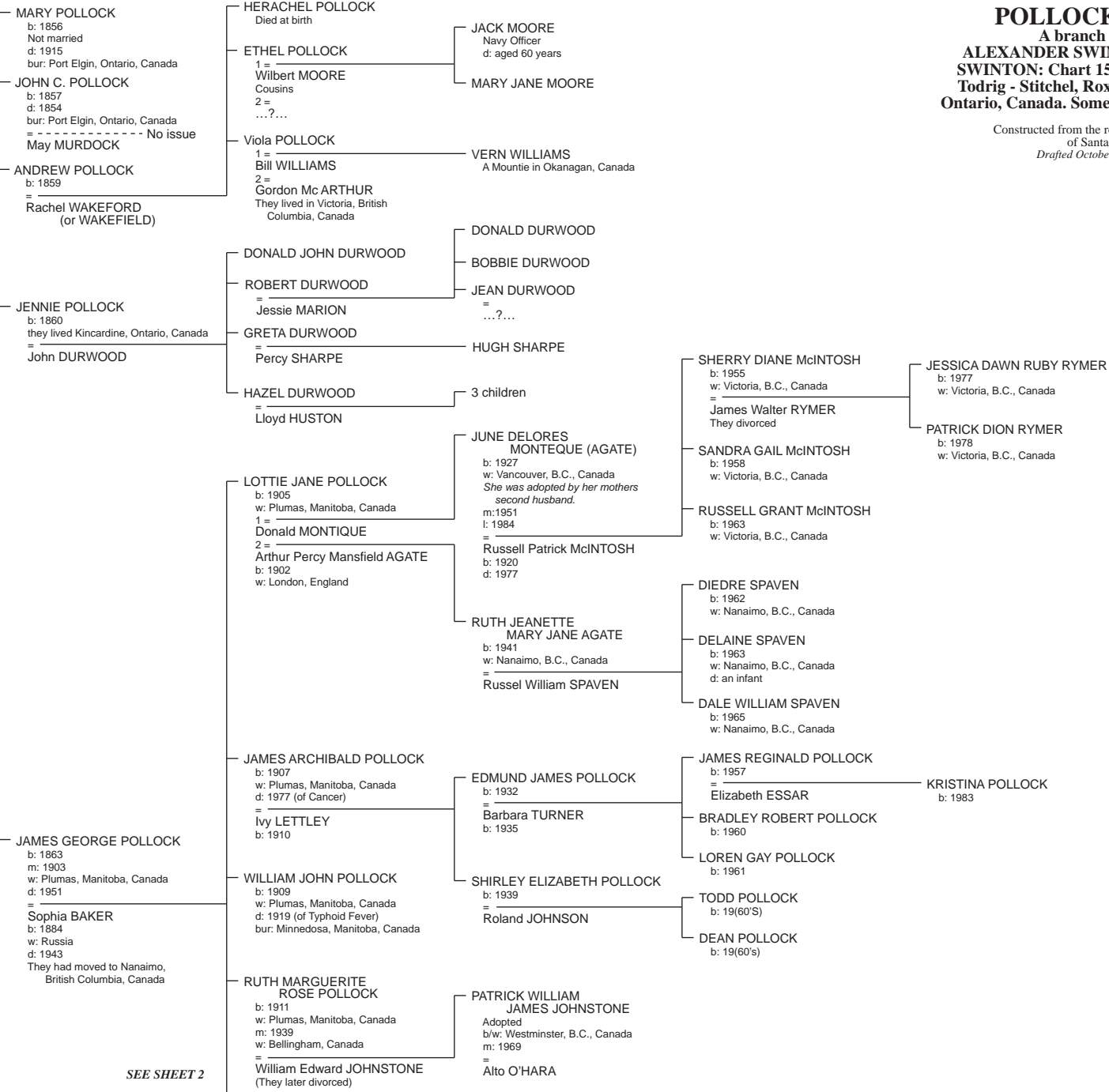


POLLOCK: Chart 1, Sheet 1
A branch of the descendants of
ALEXANDER SWINTON and JANE GRIEVE (see
SWINTON: Chart 15) who migrated from the area of
Todrig - Stütchel, Roxburghshire, Scotland, settling in
Ontario, Canada. Some of the family moved into the USA.

Constructed from the research of Barbara J. (Swinton) Mordy
of Santa Clara, California, USA.
Drafted October 1993, reworked November 2007

Sheet 1
Sheet 2



See
SWINTON: Chart 15

JANE SWINTON
b: 1832
w: Todrig, Greenlaw, Scotland
1832-3: Migrated to Canada with her parents
Lived Saugeen, Ontario, Canada
d: 1903
bur: Port Elgin, Ontario
= **Archibald POLLOCK**
Son of John Pollock
b: 1828
w: Scotland
d: 1917
bur: Port Elgin, Ontario, Canada

SEE SHEET 2